



# VACUUM TUBE LIFTER

## USES

- Rationalising of the working station
- Palletising and de-palletising of bags, cartons, drums, wooden panels, metal sheets, etc.

## METHOD OF OPERATION

- The vacuum pump is connected to the lifting tube by an air hose. The vacuum occurs in the lifting tube as soon as the suction foot attaches to the load to be manipulated.
- The lifting tube contracts (like an accordion) and the load rises. The load can then be moved to the required area or suspended weightless. The up and down movement is made using the control handle.

## SAFETY FEATURES

- Protection of the vacuum pump is by a replaceable air filter situated before the pump.
- In the event of power failure, a non-return valve enables the load to be gently lowered to the floor without slipping from the suction foot.
- In the case of excess load the device will not lift at all.

## IDEALLY SUITED TO DIFFERENT SECTORS OF INDUSTRY :

- FOOD
- TIMBER
- CHEMICALS
- INDUSTRIALS, Etc.

# ACCESSORIES



Vacuum pump



Filter



Carton twin suction foot\*



Sack suction foot\*



Rectangular suction foot\*



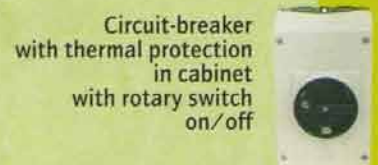
Drum suction foot\*



Bellows cups suction foot\*



Rectangular suction foot with bottom swivel



Circuit-breaker with thermal protection in cabinet with rotary switch on/off



Fixing plate



Acoustic enclosure for vacuum pump



Vacuum gauge

\*Suction feet with quick change-over attachment

# Food industry

## Palletising, de-palletising and supplying of hoppers

### OUR SECTORS OF ACTIVITY :

- Slaughter-houses
- Dairies
- Preserving
- Fish processing industry
- Grain processing companies
- Animal food
- Industrial bakeries and confectioneries
- Drinks industry

*Palletising and de-palletising of sacks*



*Handling of round cheese*



*Handling of frozen meat*

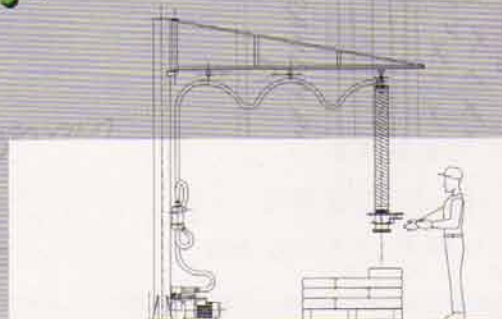


*Handling of cases with extended articulated handle*



*Palletising of cartons with extended handle*

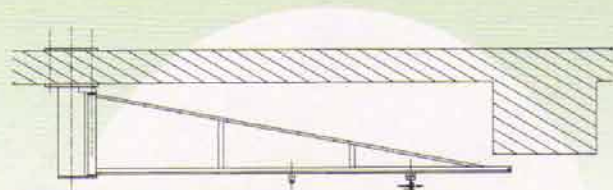
# Manut-LM



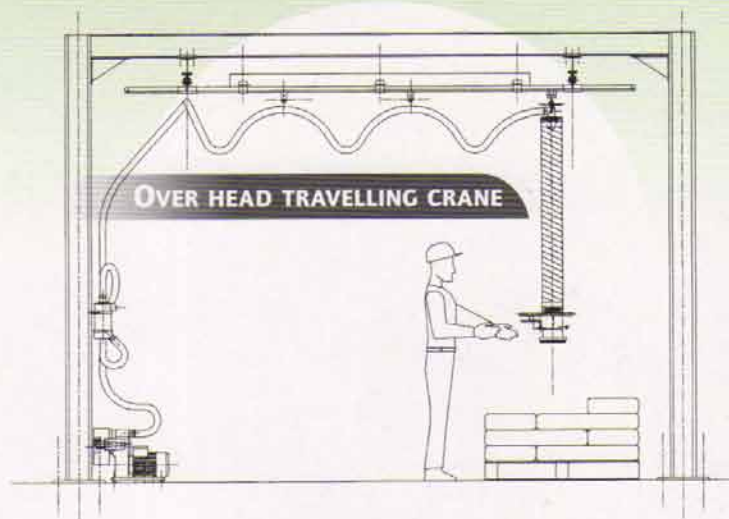
## METHOD OF OPERATION

- The vacuum pump is connected to the lifting tube by an air hose. The vacuum occurs in the lifting tube as soon as the suction foot attaches to the load to be manipulated.
- The lifting tube contracts (like an accordion) and the load rises. The load can then be moved to the required area or suspended weightless. The up and down movement is made using the control handle.

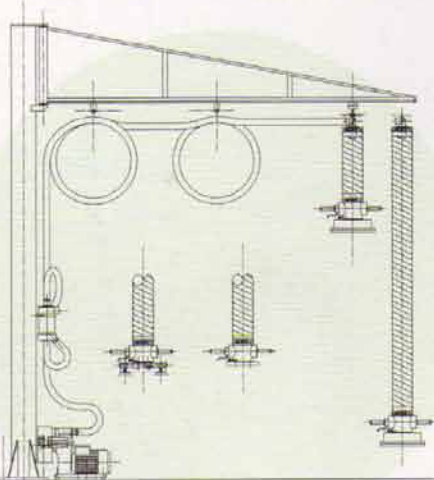
## Different types of supports for the vacuum tube lifter



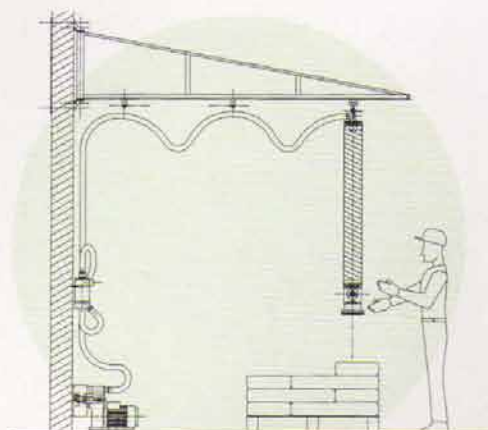
**CEILING MOUNTED COLUMN  
WITH SWIVELLING JIB ARM**



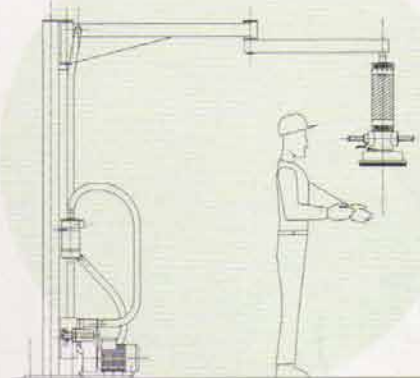
**OVER HEAD TRAVELLING CRANE**



**FLOOR MOUNTED COLUMN  
WITH SWIVELLING JIB ARM**



**WALL MOUNTED  
SWIVELLING JIB ARM**



**KNUCKLE JOINTED JIB ARM**

### TECHNICAL

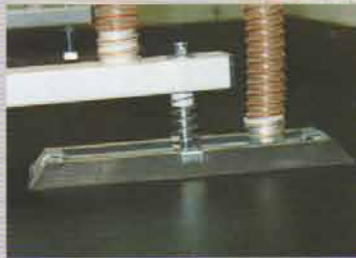
- Electric supply : **230/400 V, three phase, 50 Hz**
- Electrical protection: **IP55, IP65, ADF...**
- Finish: **Steel epoxy paint or stainless steel.**
- Electrical power: **3 kW - 4 kW**
- Lifting speed: **0 - 50 m/s**
- Standard colour: **RAL 6018**
- Lifting tube diameter: **80 to 300 mm**
- Standard stroke: **1500 to 1700 mm**

Discover our vacuum tube lifter for the handling of wooden panels, wooden boards, sawn timber, etc.

For transferring material to vertical or horizontal machines

➔ **OUR SECTORS OF ACTIVITY :**

- Timber yards
- Wood machine suppliers
- Furnishing
- Kitchen furnishing
- Manufacturers of furniture
- Manufacturers of panels
- Industrial joinery
- Roof truss manufacturer
- Sawmills



*Handling of panels horizontal to horizontal*



*Barrel handling*



*Panel tilter*

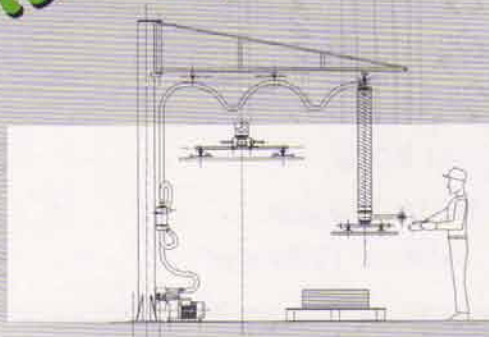


*Handling of timber for supplying a machine*



*Handling of timber in sawmills*

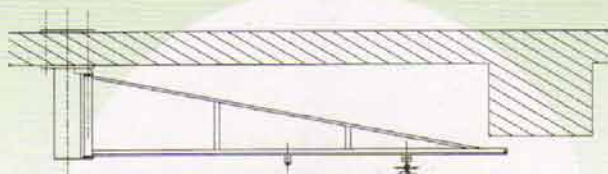
**Manut-LM**



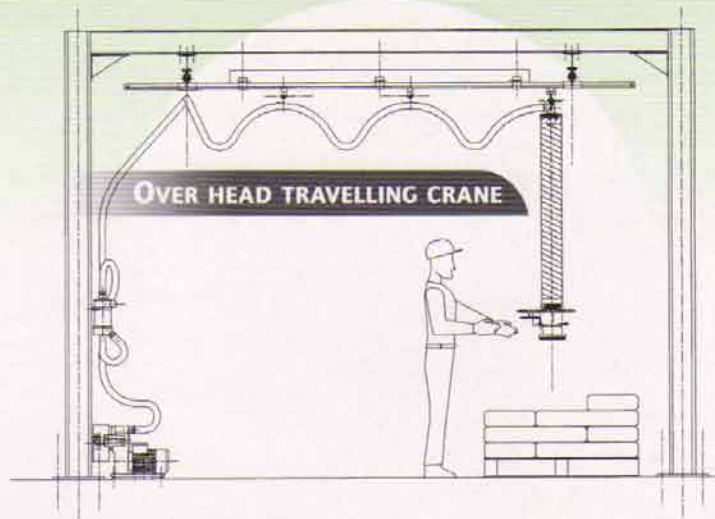
**METHOD OF OPERATION**

- The vacuum pump is connected to the lifting tube by an air hose. The vacuum occurs in the lifting tube as soon as the suction foot attaches to the load to be manipulated.
- The lifting tube contracts (like an accordion) and the load rises. The load can then be moved to the required area or suspended weightless. The up and down movement is made using the control handle.

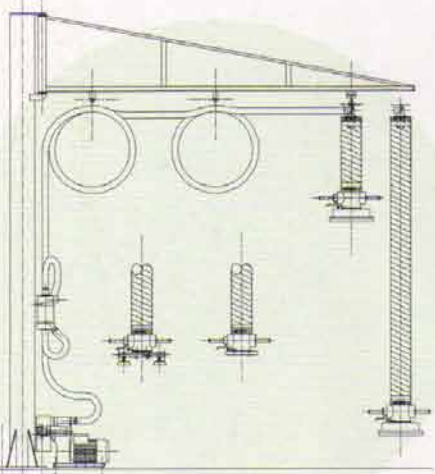
## Different types of supports for the vacuum tube lifter



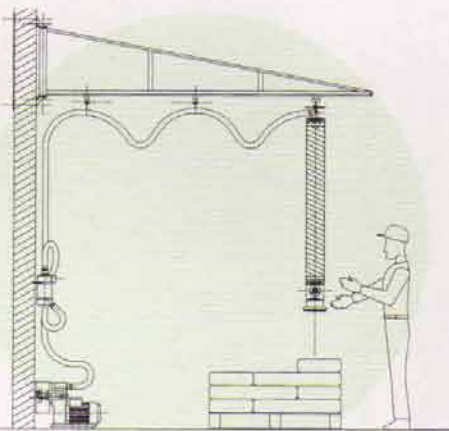
**CEILING MOUNTED COLUMN  
WITH SWIVELLING JIB ARM**



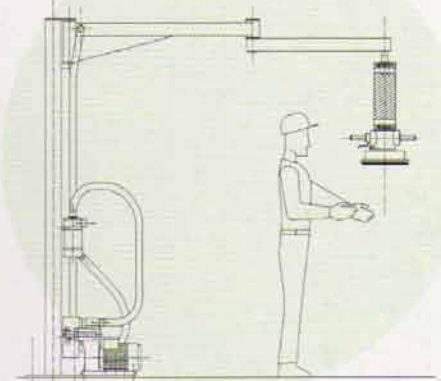
**OVER HEAD TRAVELLING CRANE**



**FLOOR MOUNTED COLUMN  
WITH SWIVELLING JIB ARM**



**WALL MOUNTED  
SWIVELLING JIB ARM**




**KNUCKLE JOINTED JIB ARM**

### TECHNICAL

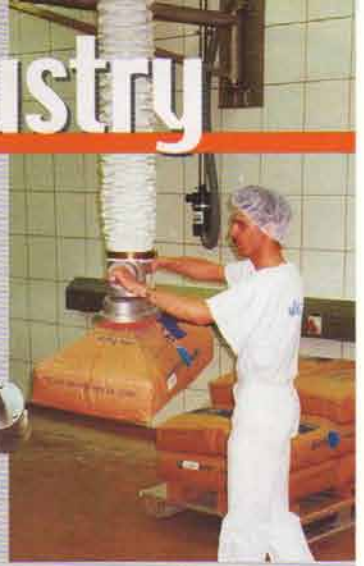
- Electric supply : **230/400 V, three phase, 50 Hz**
- Electrical protection: **IP55, IP65, ADF...**
- Finish: **Steel epoxy paint or stainless steel.**
- Electrical power: **3 kW - 4 kW**
- Lifting speed: **0 - 50 m/s**
- Standard colour: **RAL 6018**
- Lifting tube diameter: **80 to 300 mm**
- Standard stroke: **1500 to 1700 mm**

## Supplying mixers, palletising and de-palletising of loads


**OUR SECTORS OF ACTIVITY :**

- Transformation of chemical products
- Manufacturer of glue
- Manufacturer of paints and polishes
- Manufacturer of cosmetics
- Plastic and rubber industry
- Pharmaceuticals
- Petrochemicals
- Manufacturer of fertilisers

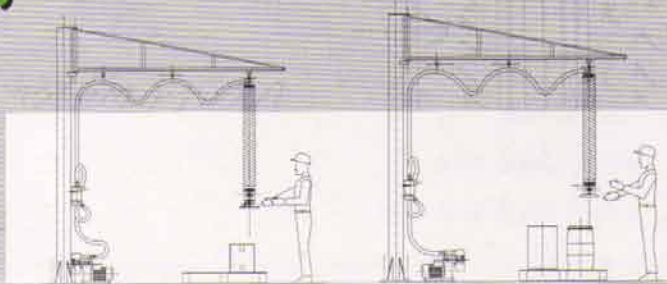
Drum tilter


 Vacuum lifter  
 in stainless steel  
 for sack handling  
 in controlled en
220 litre drum  
handlingPalletising  
of cartons

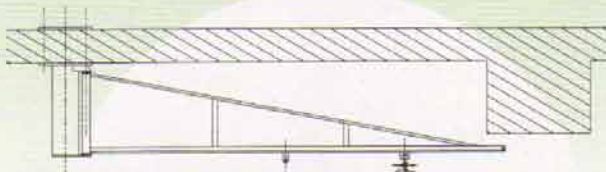
# Manut-LM


**METHOD OF OPERATION**

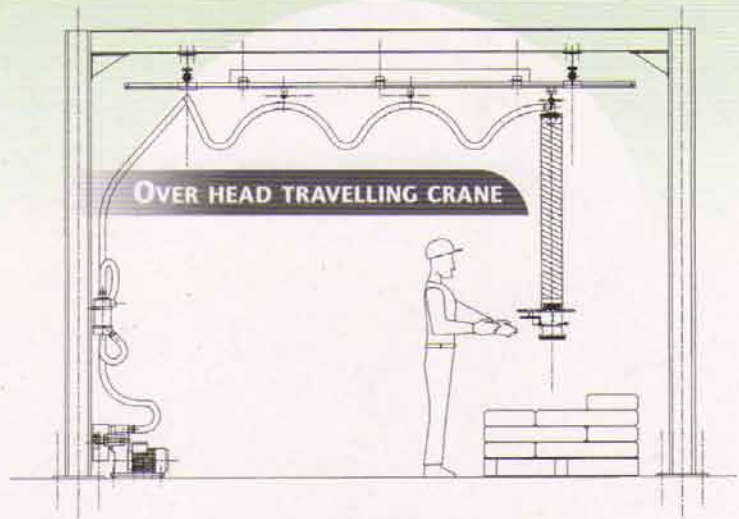
- The vacuum pump is connected to the lifting tube by an air hose. The vacuum occurs in the lifting tube as soon as the suction foot attaches to the load to be manipulated.
- The lifting tube contracts (like an accordion) and the load rises. The load can then be moved to the required area or suspended weightless. The up and down movement is made using the control handle.



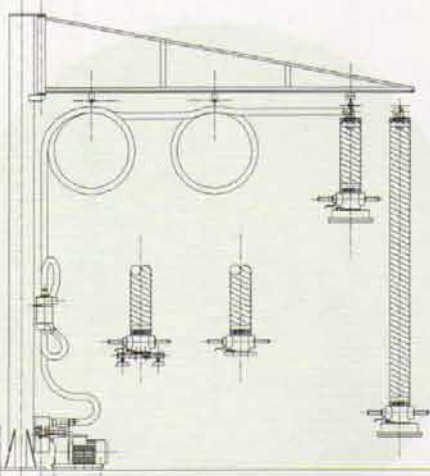
## Different types of supports for the vacuum tube lifter



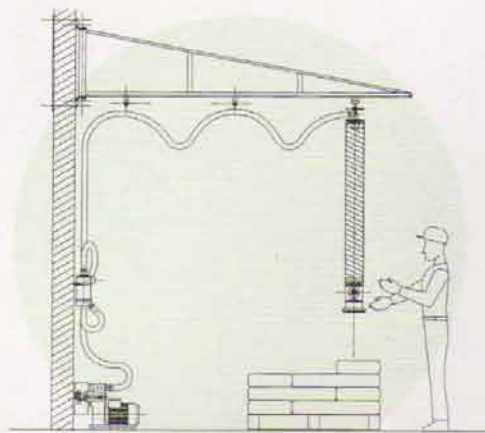
**CEILING MOUNTED COLUMN  
WITH SWIVELLING JIB ARM**



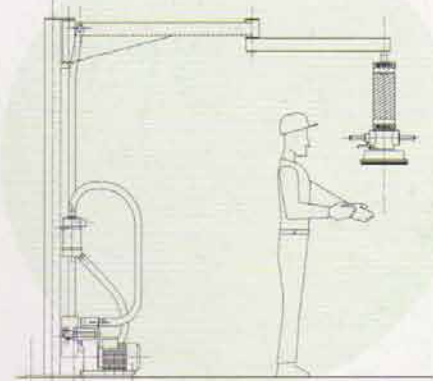
**OVER HEAD TRAVELLING CRANE**



**FLOOR MOUNTED COLUMN  
WITH SWIVELLING JIB ARM**



**WALL MOUNTED  
SWIVELLING JIB ARM**



**KNUCKLE JOINTED JIB ARM**

### TECHNICAL

- Electric supply : **230/400 V, three phase, 50 Hz**
- Electrical protection: **IP55, IP65, ADF...**
- Finish: **Steel epoxy paint or stainless steel.**
- Electrical power: **3 kW - 4 kW**
- Lifting speed: **0 - 50 m/s**
- Standard colour: **RAL 6018**
- Lifting tube diameter: **80 to 300 mm**
- Standard stroke: **1500 to 1700 mm**

# Special applications

The vacuum tube lifter can be used whatever the load to be handled. Some typical applications :



Handling of cloth rolls with plastic film covering



Handling of computer equipment



Handling of a chair with pneumatic grippers



Handling of paving & kerb stones



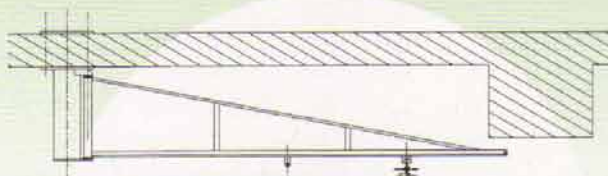
Handling of small loads at the work station

# Manut-LM

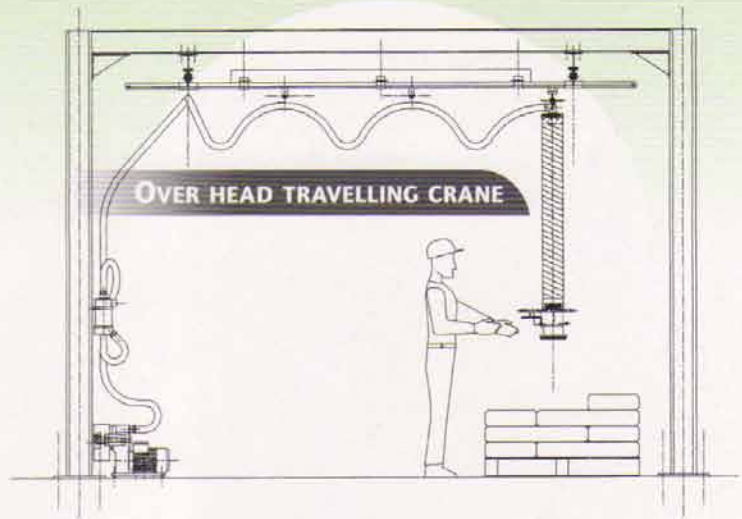
## METHOD OF OPERATION

- The vacuum pump is connected to the lifting tube by an air hose. The vacuum occurs in the lifting tube as soon as the suction foot attaches to the load to be manipulated.
- The lifting tube contracts (like an accordion) and the load rises. The load can then be moved to the required area or suspended weightless. The up and down movement is made using the control handle.

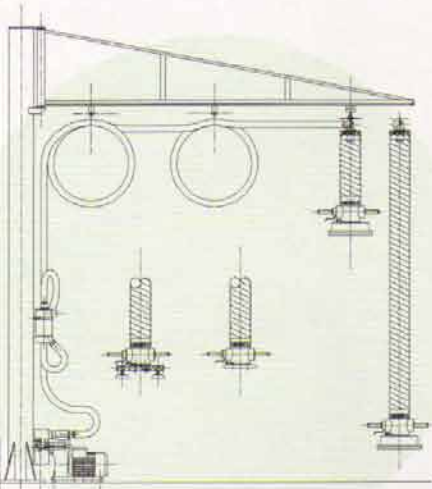
## Different types of supports for the vacuum tube lifter



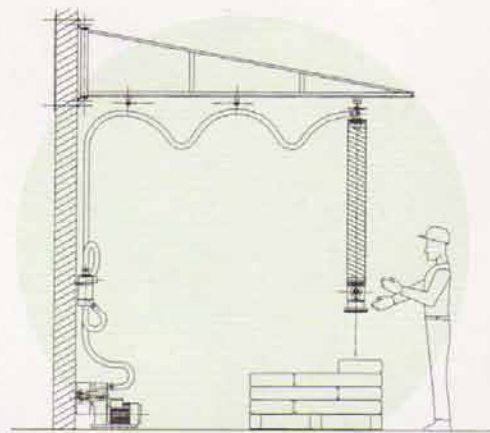
**CEILING MOUNTED COLUMN  
WITH SWIVELLING JIB ARM**



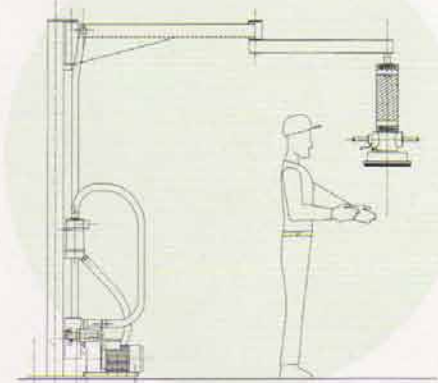
**OVER HEAD TRAVELLING CRANE**



**FLOOR MOUNTED COLUMN  
WITH SWIVELLING JIB ARM**



**WALL MOUNTED  
SWIVELLING JIB ARM**



**KNUCKLE JOINTED JIB ARM**

### TECHNICAL

- Electric supply : **230/400 V, three phase, 50 Hz**
- Electrical protection: **IP55, IP65, ADF...**
- Finish: **Steel epoxy paint or stainless steel.**
- Electrical power: **3 kW - 4 kW**
- Lifting speed: **0 - 50 m/s**
- Standard colour: **RAL 6018**
- Lifting tube diameter: **80 to 300 mm**
- Standard stroke: **1500 to 1700 mm**